

Proserv Master Control Station (MCS)

Proserv Master Control Station provides subsea operators with the latest advances in topside control and data monitoring systems. The design is based on the JIP MDIS (MCS/DCS Interface Standardization) current recommendations. The MCS is backward compatible with legacy systems such as Modbus allowing existing customers to upgrade or extend fields without any obsolescence issues.

Mechanical design

The mechanical design uses standard 19" rack mounted equipment and using a single umbilical both MCS and EPU can be located within one 19" rack providing a space saving solution.

Communications to Subsea

The MCS contains Proserv's proven communications technology providing multi-drop powerline capabilities up to 4 Mbit (OFDM) using copper or 1.00 Mbit using fiber optic to the subsea network. Subsea power and communications is delivered through the EPU and TPCU modules in the MCS.

Communications to DCS

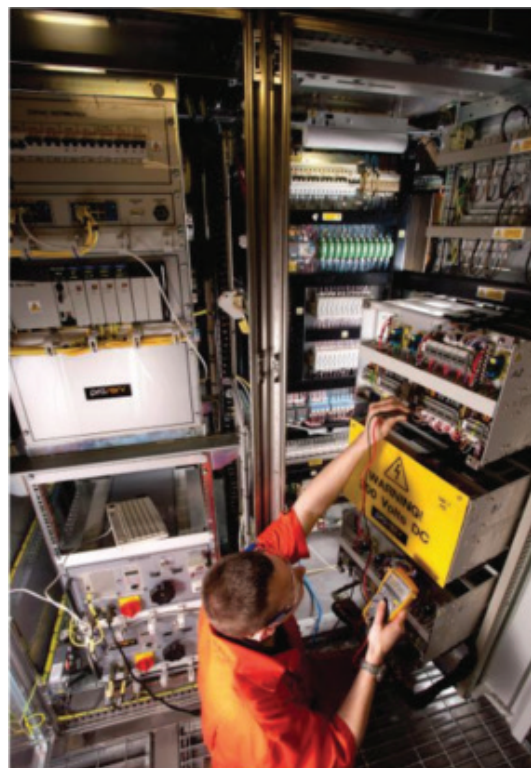
DCS communications can be either Modbus, OPC UA/DA or any industrial client specified protocol.

Transparent Communications

Communications to Subsea devices are provided transparently at the MCS; additionally CanBus™ devices connected to the SEM are mapped via MODBUS and are available in the Modbus format for receipt or transfer to other systems.

Seamless Gateway

For larger systems requiring data to be pushed to various clients, Proserv's 'TIACS' software suite allows data to be gathered centrally and pushed to many clients using different protocols and formats. No protocol converters or expensive bespoke software drivers are required.



| Technical Specification | |
|------------------------------------|--|
| Single Cabinet | |
| Unit size | 800 x 600 x 1800 mm high. On 100 mm high plinth |
| Overall weight | 450 kg (992 lbs.) |
| Internal equipment mounting system | Rittal/ Type 19" equipment racking modules |
| Equipment location | Safe area location only |
| MCS Consists of: | Engineering work station Redundant PLC modules type Allen Bradley Control Logix c/w Flex I/O Dual Redundant AC and DC Power Distribution Filter Isolation Module Redundant communication modules - TPCU Redundant electrical power units - EPU's Optional TIACS server providing protocol gateway to clients |
| External connections | Terminals for top or bottom cable entry |
| Internal connection type | Canon or Elco type connectors |
| Power supply | 2 off 120-230 VAC 50/60 Hz 16A rated from UPS |
| Hardwired ESD/PSD inputs | Yes |
| PCS/DCS communication | Yes, Modbus TCP, Modbus RTU , OPC UA/DA |
| HPU Communication | Allen Bradley Ethernet DLR (Device Level Ring) |

ingenious simplicity

See page 2

Proserv Master Control Station (MCS)

| External Interfaces | |
|--|---|
| Ethernet | Ethernet devices (ISO / IEC 8802.3) |
| Transparent | User defined and CanBus TM interfaces to subsea |
| Fiber optic | up to 120 km single mode fiber |
| Serial | RS232, RS485/422 |
| Integral Engineering Workstation (EWS) - Typical of... | |
| EWS | Provides graphics interface for the MCS |
| Unit size | 8u x 360 mm |
| Weight | 20 kg (44 lbs.) |
| Keyboard | Integral membrane on EWS |
| Mouse | Touch Pad on EWS |
| Media | CD-RW / USB |
| VDU | Min 15.4" TFT LCD |
| CPU | Latest Intel / AMD min 1.8 GHz |
| RAM | 8 GB |
| Hard drive | Min 200 Gb unformatted size |
| Operating system | Windows 7 / Windows 2008 server |
| Application software | Factory Talk View (FT View) / Wonderware InTouch |
| Electrical Power Unit (EPU) | |
| EPU | Provides subsea AC power per channel |
| Unit size | 6u x 421 mm (1' 46") |
| Weight | 35 kg (72.75 lbs.) |
| VAC Input | 120:230 VAC 50/60 Hz, 16A via Type D MCB |
| VAC Output | Nominal 0-600 VAC, 4 A / 0-700 VAC, 5A - providing cable ratings are upgraded |
| Control | Manual via keyswitch and ramp up / down power handle and Auto using MCS PLC control |
| Topside Power & Communications Unit (TPCU) | |
| TPCU | Provides subsea communications per channel |
| Unit size | 3u x 415 mm (1' 46") |
| Weight | 10 kg (22 lbs.) |
| VAC Input | 120 VAC 50/60 Hz, 1A via Type C MCB |
| VAC Input (Subsea) | 0-760 VAC Rated (Diplexer rating) |
| VAC Output (Subsea) | 0-760 VAC Rated (Diplexer rating) |
| Instrumentation | Line Insulation Unit (LIM), DIRUS Power Monitoring Unit, OCC or OCX topside modem, media switches |

ingenious simplicity

info@proserv.com
www.proserv.com